



KL-0173-6.. A Rethreading Tool for Wheel Studs



Product information EN
⚠ Read and understand before use!



THREAD RESET



www.gedore-automotive.com



GEDORE Automotive GmbH

Breslauer Straße 41
78166 - Donaueschingen
Postfach 1329
78154 Donaueschingen - GERMANY

☎ +49 (0) 771 / 8 32 23-0
☎ +49 (0) 771 / 8 32 23-90
✉ info.gam@gedore.com
🌐 gedore-automotive.com

GEDORE TOOLS, INC.

Only for USA, Canada & Mexico / Sólo para EE.UU., Canadá y México
Seulement pour les USA, le Canada et le Mexique
7187 Bryhawke Circle, Suite 700
North Charleston, SC 29418, USA

☎ +1-843 / 225 50 15
☎ +1-843 / 225 50 20
✉ info@gedoretools.com
🌐 gedore.com

Version 10/2023

Product description

KL-0173-6.. A series - Rethreading tools for wheel studs

Universally applicable on wheel studs and wheel bolts, for commercial vehicles, passenger cars and vans.

The rethreading tool enables fast and cost-saving reforming of damaged threads on wheel studs and wheel bolts.

In this process, the thread is deformed back to its original geometry by rolling (forming, pressing, coining), without cutting. As a result, the strength of the wheel studs or wheel bolts is fully retained, and the surface is again additionally compacted. Unlike thread cutting, no material is removed in the process.

The compact design and the simple drive with a conventional hexagonal socket enables a quick and easy application directly on the vehicle.



KL-0173-611 A - Rethreading tool

Specifications

Drive: Hexagon SW41
Thread: M12x1.25

KL-0173-622 A - Rethreading tool

Specifications

Drive: Hexagon SW41
Thread: M14x1.5

KL-0173-612 A - Rethreading tool

Specifications

Drive: Hexagon SW41
Thread: M12x1.5

KL-0173-662 A - Rethreading tool

Specifications

Drive: Hexagon SW46
Thread: M22x1.5

KL-0173-601 A - Rethreading tool kit

Consisting of KL-0173-611 A and KL-0173-622 A.

Specifications

Drive: Hexagon SW41
Thread: M12x1.25 + M14x1.5

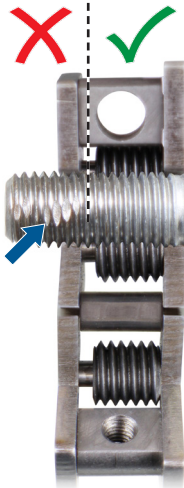
⚠ Safety instructions and regulations

- **Before using** the special tool, read and understand **all** safety instructions and **follow** them for **safe use!**
- Use the special tool **as intended** and **always** carry out maintenance and repairs in compliance with the regulations on occupational safety and accident prevention as well as the vehicle manufacturer's instructions!
- Before **each** use, check the special tool **carefully** for damage, loose parts, or unauthorised modifications. **Never** use it if you notice any such deficiencies!
- **Always** wear your personal protective equipment (*such as safety goggles, protective gloves, safety shoes*) during work!

TYPICAL APPLICATION

This typical application example describes how to reshape a damaged thread.

📷 1: Align the thread rollers and place the rethreading tool correctly on the thread...



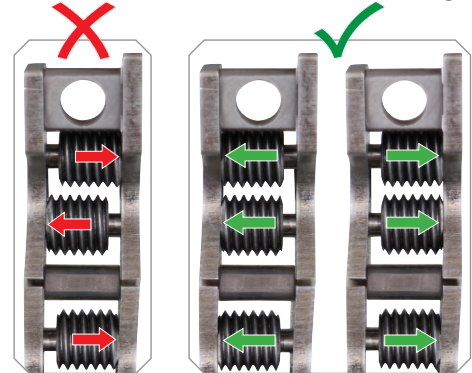
CAUTION

The tread rollers on the rethreading tool may cant against each other and this can lead to damage during use!

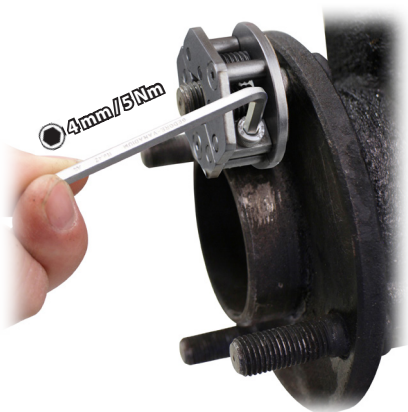
► **Always** place the rethreading tool at an undamaged spot of the thread!

► When placing it, **always** make sure that all three thread rollers are on the same side!

1. Open the rethreading tool so that it can be placed behind the damaged area on the thread as shown. Loosen the hexagon socket head screw a few turns using a **4 mm** hexagon socket spanner



📷 2: Close the rethreading tool completely...

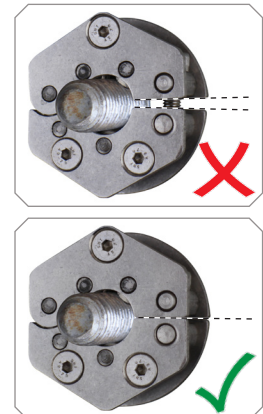


CAUTION

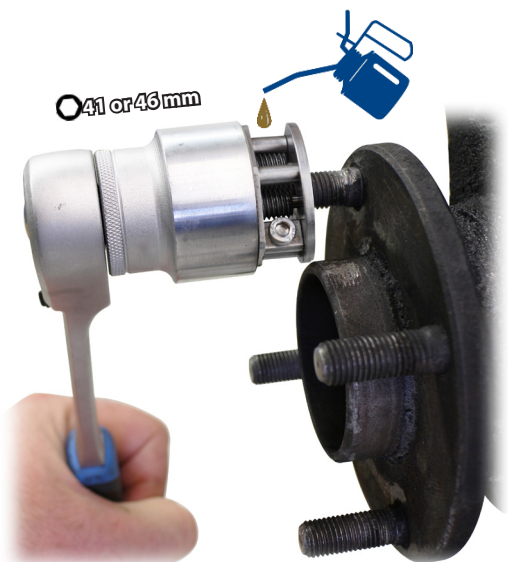
The thread can be damaged!

► The rethreading tool can only be closed without force when the tool engages completely and cleanly into the thread!

2. Close the rethreading tool completely by hand and then tighten the hexagon socket head screw with **5 Nm**.



📷 3: Lightly oil the damaged thread and reshape it...



CAUTION

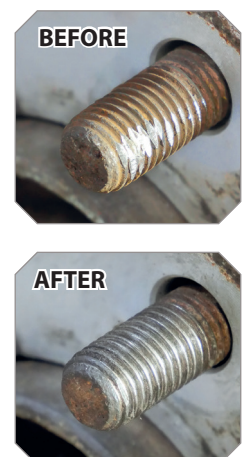
Rethreading tool and thread can be damaged!

► If the rethreading tool is canted or runs very sluggishly, it must be checked whether it has been correctly applied to the thread and, if necessary, reapplied!

► **Never** use the rethreading tool with a machine-operated drive!

3. First, put some oil on the thread.

To re-shape the thread, turn the rethreading tool over the damaged area of the thread using a **41 or 46 mm** socket and a reversible ratchet.



GEDORE-Werkzeugfabrik GmbH & Co. KG

Remscheider Straße 149
42899 - Remscheid
Postfach 120361
47873 Remscheid
GERMANY

Vertrieb DEUTSCHLAND

☎ +49 (0) 2191 / 596-0
☎ +49 (0) 2191 / 596-230
✉ info@gedore.com
🌐 www.gedore.com

Sales INTERNATIONAL

☎ +49 (0) 2191 / 596-910
☎ +49 (0) 2191 / 596-911
✉ info@gedore.com
🌐 www.gedore.com

GEDORE TOOLS, INC.

Only for USA, Canada & Mexico
Sólo para EE.UU., Canadá y México
Seulement pour les USA, le Canada et le Mexique
7187 Bryhawke Circle, Suite 700, North Charleston, SC 29418, USA

☎ +1-843 / 225 50 15
☎ +1-843 / 225 50 20
✉ info@gedoretools.com
🌐 www.gedoretools.com

Worldwide GEDORE service centers and offices are listed on the Internet at: www.gedore.com

GEDORE Automotive GmbH

Breslauer Straße 41
78166 - Donaueschingen
Postfach 1329
78154 Donaueschingen
GERMANY

Vertrieb DEUTSCHLAND

☎ +49 (0) 771 / 8 32 23-0
☎ +49 (0) 771 / 8 32 23-90
✉ info.gam@gedore.com
🌐 gedore-automotive.com



www.gedore-automotive.com